



Stopper plates

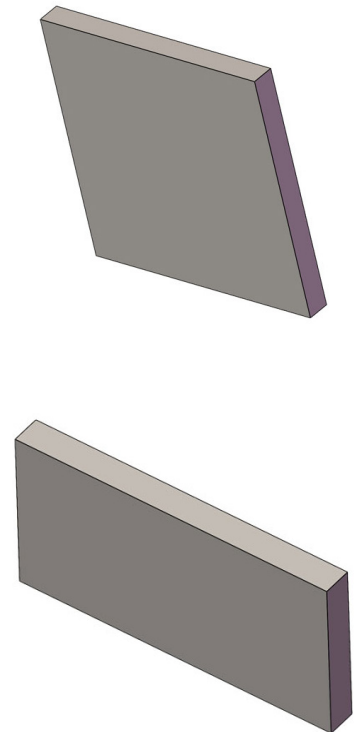
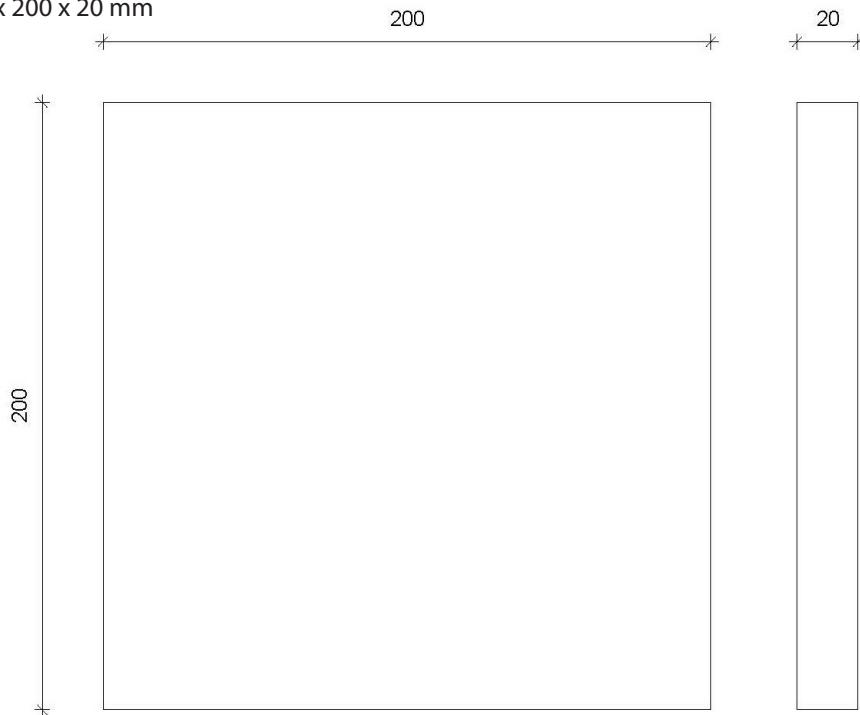
Stopper plates - various

Various dimensions and shapes possible

Laser - cut

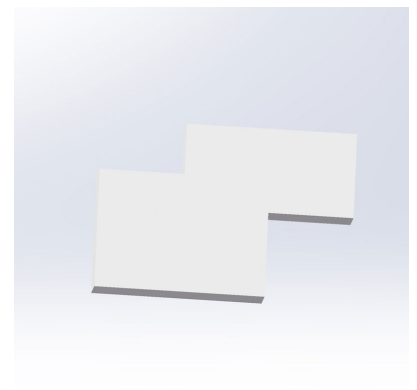
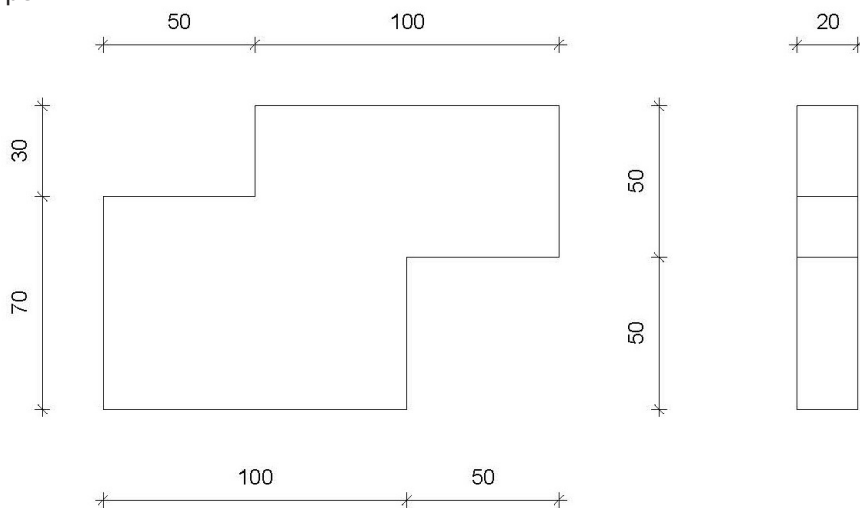
Example:

200 x 200 x 20 mm



Example:

Z - Type



- Material : Q235
- Thickness : 16, 18, 20mm - on request alternative thickness possible
- Finish : as per customer request, normally natural black, oiled or with corrosion inhibitor
- Packing : as per customer request

(Important note: Measures and weights without engagement. We reserve the right to change technical details.)