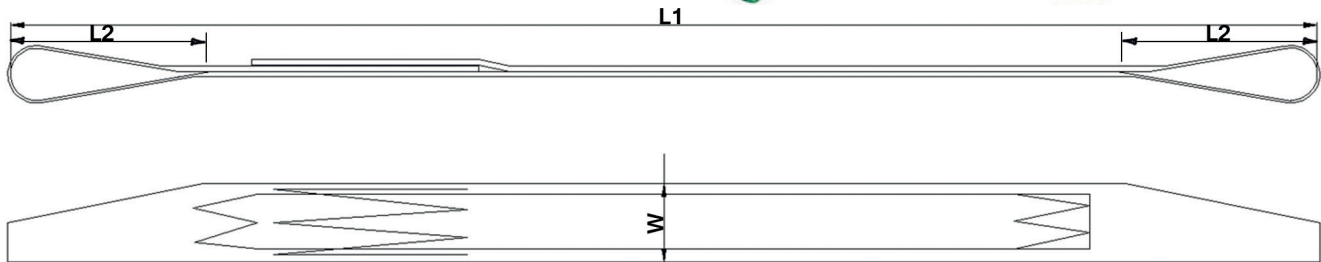




Webbing slings

Polyester webbing slings, WLL 1-10 t, double layer, both sides eye

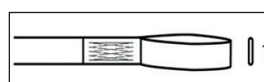


- Standard : EN1492-1
- Safety factor : 7:1
- Packing : as per customer request, with user instruction and CE manufacturer's declaration in shrink foil available

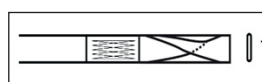
Item code**	WLL (t)	Webbing width* (mm)	Colour	Thickness (mm)	Loop length L2		
					1m	2m	3m
E-WB-1-X	1	30	purple	6	250	400	-
E-WB-2-X	2	60	green	6	250	400	-
E-WB-3-X	3	90	yellow	6	250	400	-
E-WB-4-X	4	120	grey	6	-	500	-
E-WB-5-X	5	150	red	6	-	550	-
E-WB-6-X	6	180	brown	6	-	600	-
E-WB-8-X	8	240	blue	6	-	-	750
E-WB-10-X	10	300	orange	6	-	-	1,000

* Other webbing widths on request available. / ** X = Length L1

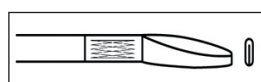
- Label : stitched in the loop, label protection on request available; with logo or other details available
- Print : letters / motives / logos are printable in black, special colours on request
- Eye types :



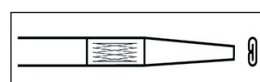
Type 1:
Flat loop



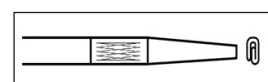
Type 2:
Single twisted loop



Type 3:
Single tapered loop on 1/2 of webbing width



Type 4:
Double tapered loop on 1/2 of webbing width



Type 5:
Tapered loop on 1/3 of webbing width

(Important note: Measures and weights without engagement. We reserve the right to change technical details.)