



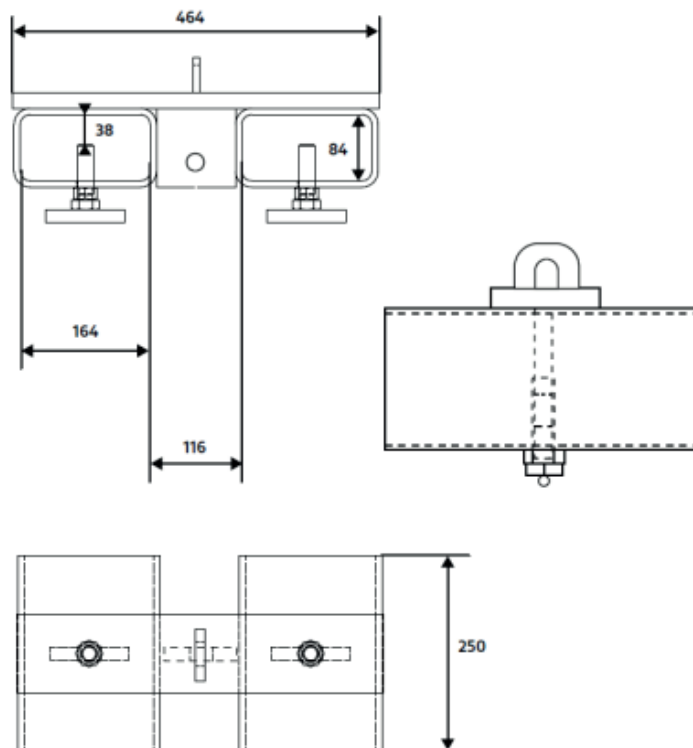
Forklift Hooks

**Type GST**



- According to 2006/42/EC Machinery Directive and EN 12100-1/2
- Standard painting: 2-components-painting RAL 2010, hot-dip galvanized on request
- WLL 2,000 / 3,000 / 5,000 kg
- Standard delivery incl. shackle and swivel hook (not rotating under load)
- Optionally available with safety chain

Article number	WLL (kg)	Forklift pockets Dimensions (mm)	Length (mm)	Weight (kg)
126.GST200	2,000	164 x 80	464mm	29
126.GST300	3,000			30
126.GST500	5,000			31



(Important note: Measures and weights without engagement. We reserve the right to change technical details.)