



Slings & Corner protectors

## HMPE softslings | Product specifications

We offer a full range of HMPE Round Slings & HMPE corner protectors.

The HMPE Round Slings are available in 3 different executions with WLL up to 500 t (SF 7:1):

- HMPE core with yellow polyester sleeve
- HMPE core with 1.3 mm thick HMPE light duty HMPE sleeve
- HMPE core with 2.4 mm thick HMPE heavy duty HMPE sleeve

The HMPE corner protectors are available in various sizes up to 310 mm width (matching all the commonly used webbing slings and round slings dimensions).

### The power of constant - High performance HMPE slings

Nothing is so valuable as time. Reducing the number of preparatory movements during hitching and rigging, or even skipping some of these altogether means direct cost-savings.

You can make this significant efficiency gain a constant factor with these high performance HMPE slings, providing you an ongoing advantage for the total lifting project in terms of increasing handling speed using less resources. Move faster towards the highest possible performance.



### Engineered for complexity and precision

Complex lifting projects both on and offshore are becoming more common. Loads are getting bigger, heavier, and more sensitive, and the conditions more complex. With high performance HMPE slings, you have the right tools in place to effectively address these new challenges. Where traditional lifting equipment falls short in terms of properties and workability, synthetic slings are a strong alternative.

### Length tolerance down to the mm

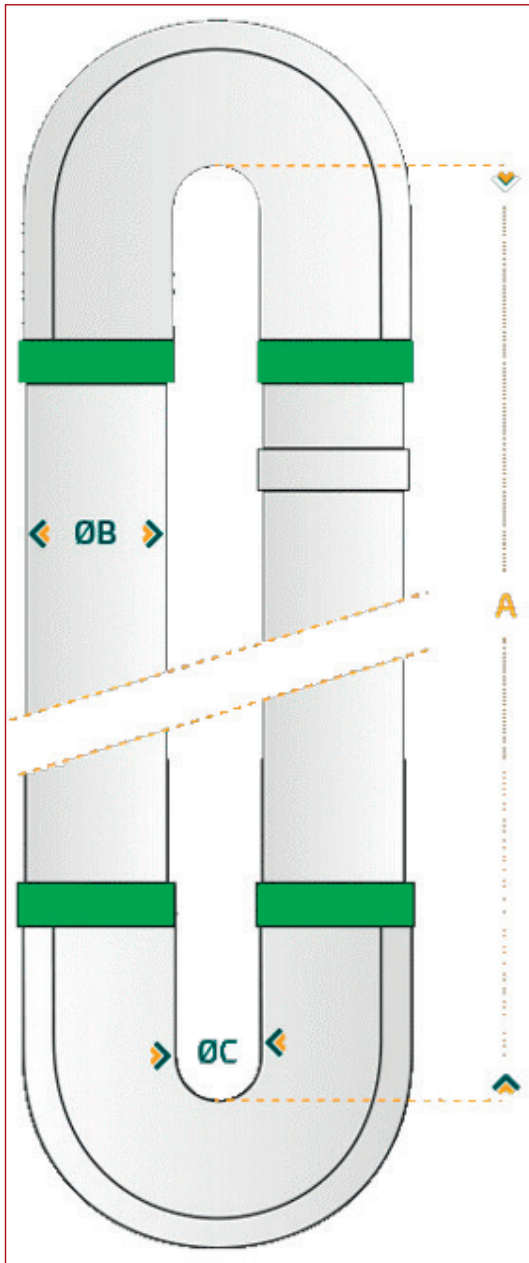
The power of the production process lies in the precision of man and machine combined. The manufacturer achieves a length tolerance in their slings down to the millimetre through continuous quality checks at material, process and output level. This assures you of a product that will always fit according to plan. This is the power of consistency.

*(Important note: Measures and weights without engagement. We reserve the right to change technical details.)*



Slings & Corner protectors

## HMPE softslings | Product specifications



### Properties:

- Capacities of up to 3,500 t MBL
- Lengths of 0.3 m to 75 m (longer on request)
- Length tolerances as low as  $\pm 10$  mm (on request)
- Elongation during use  $\pm 0.5$  % (depending on safety factor)
- Working temp. range of  $-40^{\circ}\text{C}$  to  $+60^{\circ}\text{C}$
- 3 cover options
  - 2.4 mm HMPE HEAVY duty
  - 1.3 mm HMPE Light duty
  - Polyester
- Slings in compliance with EU directive on machinery (2006/42/EC).

WLL (t)	SF	MBL (t)	Core-Ø (mm)	Min. Bending-Ø (mm)	Weight (kg/m)
10	7	70	34	47	1.5
50	7	350	75	105	4
100	7	700	106	166	7.5
200	7	1,400	150	255	13.5
300	7	2,100	184	319	19
400	7	2,800	212	395	25.5
500	7	3,500	237	441	32

\*Detail B

\*Detail C

### Synthetic fibers - Choose:

- Safer
- Sleeker
- Precision
- Durable
- Lighter
- Refurbishable





Slings & Corner protectors

## HMPE softslings | What kind of jacket is the best for your operation?

The jacket or sleeve of a softsling is to protect the core from damage, abrasion, and debris.

The core of the softsling is made from parallel laid yarns. The producer has developed a unique manufacturing process where he has full control over how the HMPE yarns are placed in a bundle. In this manner he can produce very accurate and precise and obtain a very high efficiency of the yarns:

### Length tolerance:

- 0 to 16 m EWL: +- 10 mm.
- 16 to 37 m EWL: +- 20 mm.
- 32 m EWL and up: +- 1 % absolute and +- 0,5 % relative.



To protect the most important part of your sling (the core), we can offer different sheath options as not every use or application is the same.

If you have any questions about choosing the right option for your operation, please do not hesitate to contact us.



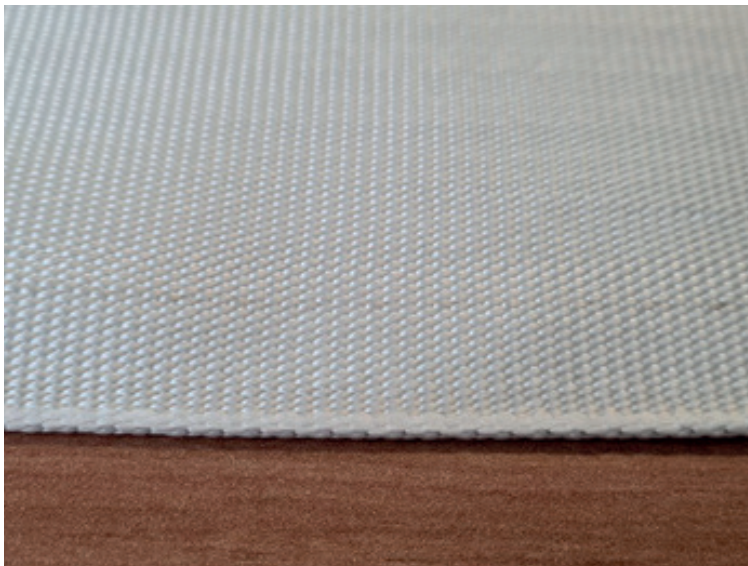
## HMPE softslings | What kind of jacket is the best for your operation?



### Option 1:

#### 2.4 mm thick Heavy Duty HMPE

Best protection of the core, suitable for continuous use and offshore type of work-environment, extremely abrasion resistant.



### Option 2:

#### 1.3 mm thick Medium Duty HMPE

Middle thickness and finer weaving, best for industry of factory use. Still very well protected, but lower priced than the 2.4 mm cover, a very flexible cover. A good choice for slings up to 100 t WLL.



### Option 3:

#### 2.5 mm thick Medium Duty Polyester (PES). Coated with polyurethane (PU).

Still a very tough cover, but more sensitive to wear than HMPE. Suitable for single projects to normal use.

In High visibility NEON yellow for a safe operation.

This cover is heavier than HMPE.

(This cover may be compared to Cordura that is a cover alternative in the sling market.)

*(Important note: Measures and weights without engagement. We reserve the right to change technical details.)*