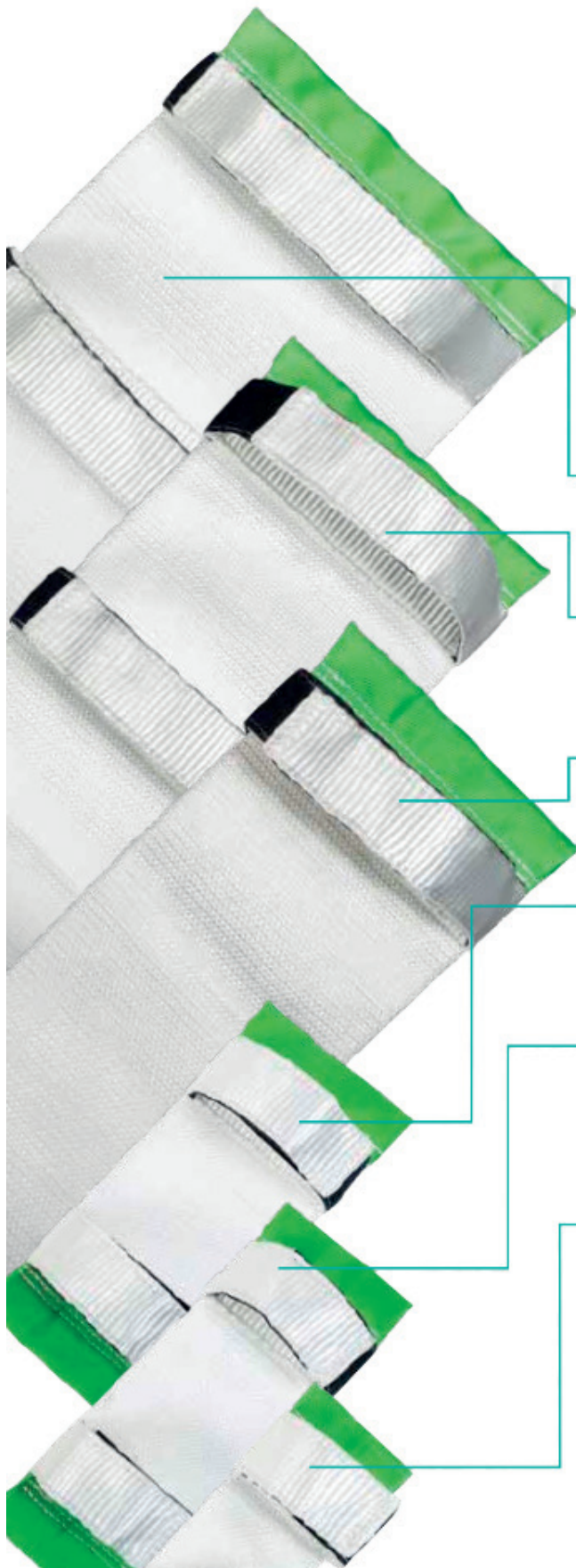




## HMPE corner protectors | Product specifications



### Certainty on the edge

The edge protection angles ensure maximum safety when handling sharp-edged loads. Avoid overstressing your lifting material and premature wear of the material with this soft edge protector made of HMPE.

Heavy duty HMPE is **extremely resistant** to abrasion, cuts, punctures and tears. When lifting sharp-edged loads they protect and improve the durability of your lifting equipment.

Velcro fasteners will allow you to **easily change and adjust** the protectors. Quick and efficient handling on-site is a welcome feature when acting safely and swiftly is crucial.

Corner protectors can also be used to protect the object or **sensitive load** from damages caused by steel wire ropes or chains or repetitive loadouts.

The Softslings Corner Protectors are assembled out of 2 layers of 3mm HMPE. This makes them **solid and tough** for heavy duty but they retain their flexibility as well.

The manufacturer uses special weaving developed over **years of experience**. This makes their corner protectors maximal resistant to cuts and tears and will increase the safety during handling.

Use corner protectors to **ensure the safety of your load and people** at the slightest chance of flex fatigue, elongation or an empty cavity.

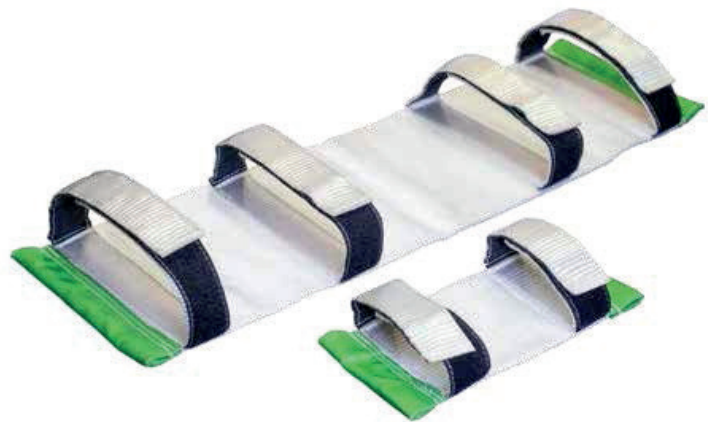


Slings & Corner protectors

## HMPE corner protectors | Product specifications

### Care and protect

Vulnerable bearing points and angles, sharp edges and sensitive load asks protection. The corner protectors are used on the sling to protect your lifting equipment, load and above all, the people working onsite. This will result in a increased safe working environment, longer lifespan of your slings or ropes and economic durability.



Made in a modern factory based in The Netherlands means fast delivery times. Thereby the corner protectors can be modified or customized according to your specific requirements.

### Standard assortment

Article No.	Width (mm)	Length (mm)	Qty. fasteners
108.ESS-CP-80	80	250	2
108.ESS-CP-110	110	300	2
108.ESS-CP-130	130	300	2
108.ESS-CP-160	160	500	4
108.ESS-CP-190	190	190	4
108.ESS-CP-230	230	800	4
108.ESS-CP-290	290	800	4
108.ESS-CP-310	310	800	4

\*The edge protection is available in standard sizes, but can also be manufactured to individual requirements upon request. Ask us about the possibilities.

### Names / Descriptions:

HMPE:	High modulus polyethylene (full name: UHMWPE ultra high molecular weight polyethylene)
WLL:	Working Load Limit
SF:	Safety factor
CGBL:	Calculated Grommet Breaking Load
EWL:	Effective Working Length
MBR / MBD:	Minimum bending radius / Minimum bending diameter
NDT/DT:	Non destructive testing / destructive testing

### Sharp edge definition

When we speak of sharp edges we use the common formula "edge radius < material thickness of the lifting sling". So a sharp edge does not always implicate a corner as sharp as a knife, but relative to the bending radius of the sling.



Slings & Corner protectors

## HMPE corner protectors | What kind of jacket is the best for your operation?

The jacket or sleeve of a softsling is to protect the core from damage, abrasion, and debris.

The core of the softsling is made from parallel laid yarns. The producer has developed a unique manufacturing process where he has full control over how the HMPE yarns are placed in a bundle. In this manner he can produce very accurate and precise and obtain a very high efficiency of the yarns:

### Length tolerance:

- 0 to 16 m EWL: +- 10 mm.
- 16 to 37 m EWL: +- 20 mm.
- 32 m EWL and up: +- 1 % absolute and +- 0,5 % relative.



To protect the most important part of your sling (the core), we can offer different sheath options as not every use or application is the same.

If you have any questions about choosing the right option for your operation, please do not hesitate to contact us.



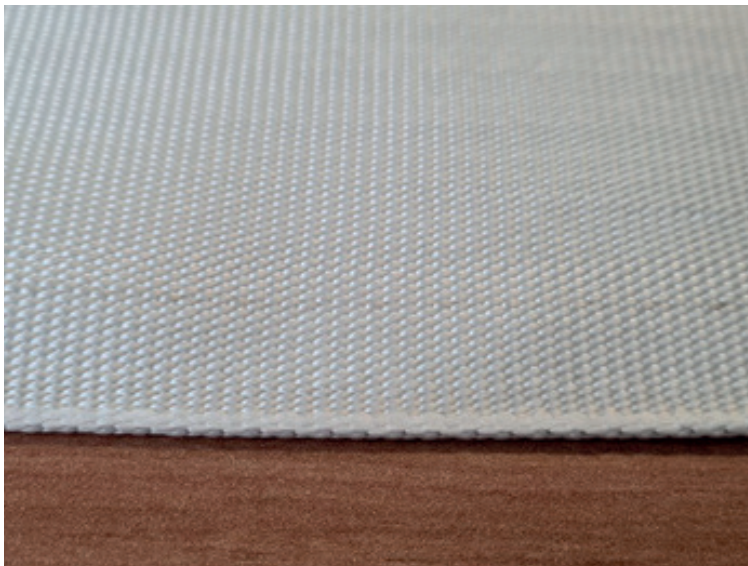
## HMPE corner protectors | What kind of jacket is the best for your operation?



### Option 1:

#### 2.4 mm thick Heavy Duty HMPE

Best protection of the core, suitable for continuous use and offshore type of work-environment, extremely abrasion resistant.



### Option 2:

#### 1.3 mm thick Medium Duty HMPE

Middle thickness and finer weaving, best for industry of factory use. Still very well protected, but lower priced than the 2.4 mm cover, a very flexible cover. A good choice for slings up to 100 t WLL.



### Option 3:

#### 2.5 mm thick Medium Duty Polyester (PES). Coated with polyurethane (PU).

Still a very tough cover, but more sensitive to wear than HMPE. Suitable for single projects to normal use.

In High visibility NEON yellow for a safe operation.

This cover is heavier than HMPE.

(This cover may be compared to Cordura that is a cover alternative in the sling market.)

*(Important note: Measures and weights without engagement. We reserve the right to change technical details.)*