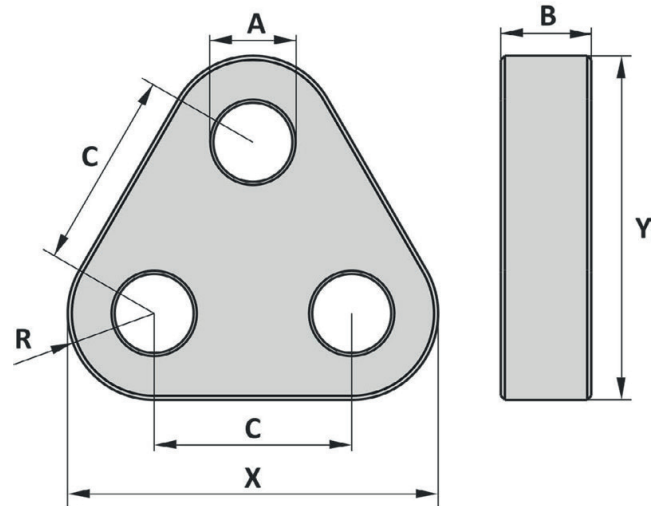




GN heavy lifting accessories

## Triangle Plate, Type TR1

Non-standard sizes or custom products available on request



- Material : high tensile steel
- Safety factor : 5 times
- Finish : painted
- Temperature range : -40°C up to +200°C, polar rated
- Standard certification : Certificate of Conformity and 3.1 material certificate EN 10204
- When there is a minimum distance between the triangle plate and the gap required, we advise to use washers.
- Spacers on the triangle plate available on request.

Art. No.	WLL ton	MBL ton	A mm	B mm	C mm	R mm	X mm	Y mm	Weight kg
107.75001700	17	85	47	35	120	65	250	234	10
107.75002500	25	125	55	40	150	80	310	290	18
107.75003500	35	175	60	50	160	90	340	319	28
107.75005500	55	275	75	70	210	105	420	392	58
107.75008500	85	425	90	80	230	135	500	469	96
107.75012000	120	600	105	100	280	170	620	582	188
107.75015000	150	750	115	110	320	185	690	647	256
107.75017500	175	875	115	110	320	195	710	667	274
107.75020000	200	1000	140	120	390	215	820	768	390
107.75025000	250	1250	150	140	390	240	870	818	518
107.75030000	300	1500	160	150	420	250	920	864	617
107.75040000	400	2000	185	200	490	300	1090	1024	1170
107.75050000	500	2500	200	200	550	360	1270	1196	1619
107.75060000	600	3000	220	200	600	400	1400	1320	1972
107.75070000	700	3500	230	250	600	400	1400	1320	2452

Tolerance: Forged parts ± 5%, machined parts ± 1 mm

(Important note: Measures and weights without engagement. We reserve the right to change technical details.)